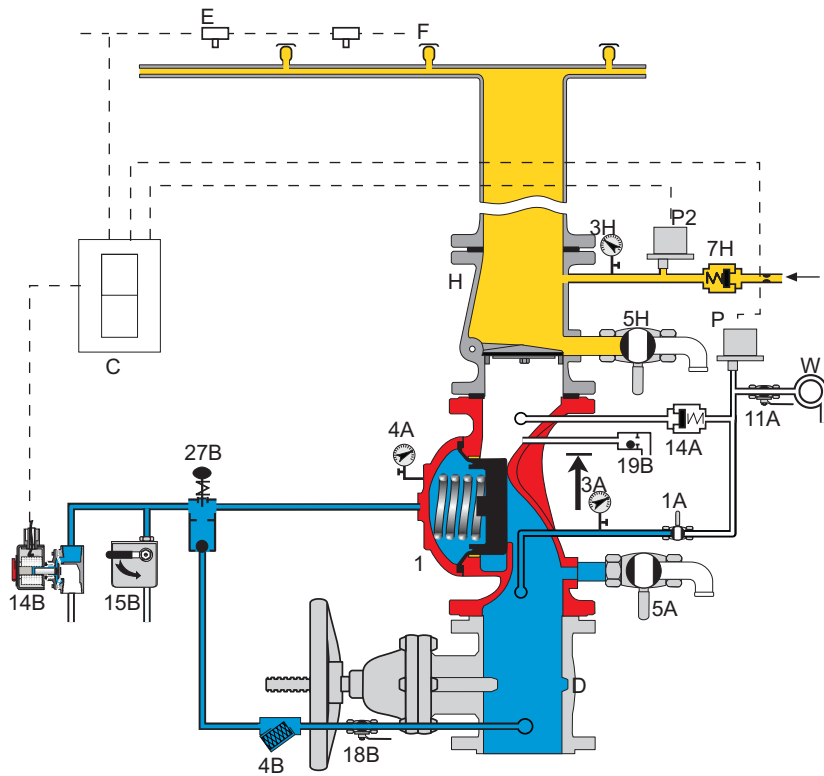


Model 400E 7M Single Interlock Preaction Valve Sequence of Operation



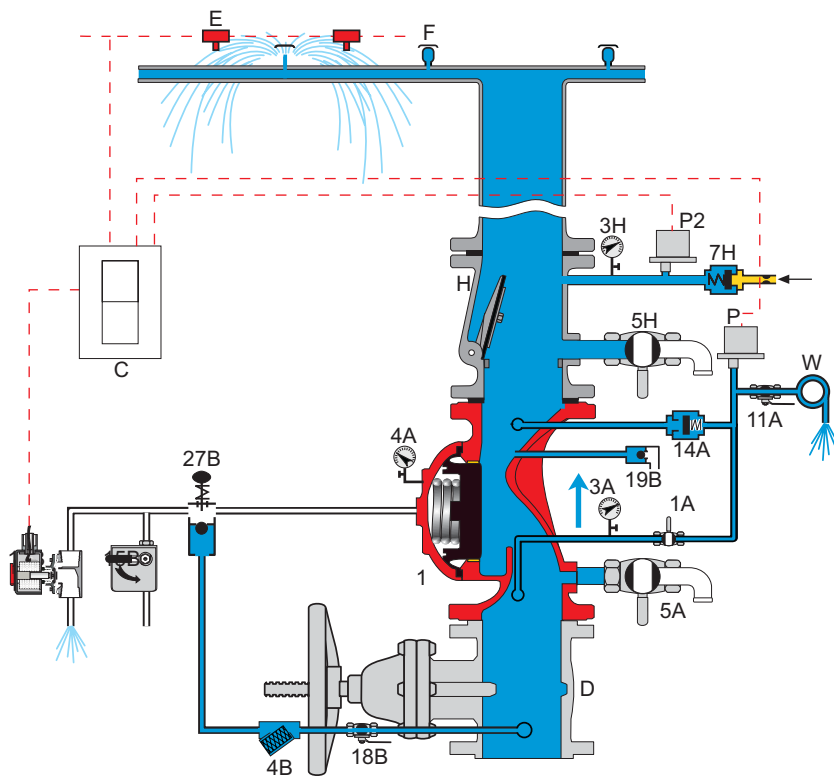
Closed Condition

Legend:

- (1) Bermad 400E Valve
- (1A) Alarm Test Valve
- (3A) Pressure Gauge
- (4A) Pressure Gauge
- (5A) Drain Valve
- (11A) Alarm Block Valve
- (14A) Alarm Non-Return Valve
- (2B) Accelerator & Priming Restriction
- (4B) Priming Stainer
- (14B) Solenoid Valve (24VDC/0.5Amp)
- (15B) Manual Emergency Release Assy.
- (18B) Priming Ball Valve
- (19B) Drip Check
- (27B) Manual Reset Device & Check Valve

Other System Items:

- (C) Cross-Zone Releasing Control Panel
- (D) Main Isolating Valve (Supervised Open)
- (H) In-Line Swing Check Valve
- (3H) Air Supervising Pressure Gauge
- (5H) Sprinkler System Drain Valve
- (7H) Spring Loaded Check Valve
- (P) Waterflow Alarm Pressure Switch (0.4 bar)
- (P2) Low Air Pressure Switch (0.4-0.8 bar)
- (W) Water Motor Alarm (Option)



Open / Operation

- Water under pressure
- Air pressure
- Vented to atmosphere